

# G2124T

24 -Port Gigabit Switch with 2 combo SFP Slots

# G2124T

## 24 -Port Gigabit Switch with 2 combo SFP Slots

---

### Products Description

G2124T is a green energy-conservation layer2 Unmanaged switch . It is specially designed to build a fast, convenient and easy-maintained wired access network. it provides 24 10/100/1000Mbps RJ45 ports and 2 Combo Gigabit SFP uplink ports. Port 23 and 24 are a link aggregation group, which can create an aggregated connection of up to 2Gbps concurrent throughput. G2124T apply with the world's leading chipset vendor Broadcom solution, which brings a strong switch performance. The all-steel-shell body improves the heat dissipation and ensures the stability. Professional port lightning-proof enables to reduce the damage of severe weather. It supports full wire-speed non-blocking forwarding and port auto-flip. With high enterprise-level art, it is the ideal solution to build your gigabit wired access network (SMBs, hotels, Video Surveillance).



- 24 10/100/1000Mbps RJ45 ports, 2 combo Gigabit SFP slots
- 19-inch rack-mountable, 1U steel case
- Plug and play, Without configuration

## Key Feature

- Compliant with IEEE802.3, IEEE802.3u, IEEE802.3x, IEEE802.3ab
- Store & forward, share memory, non-blocking architecture
- Supports MAC address self-learning and auto MDI/MDIX
- Provide 24 10/100/1000Mbps auto-negotiation ports, 2 Gigabit combo SFP slots
- Port 23 and 24 are a link aggregation group( static LAG SMAC+ DMAC)
- Supports full-duplex 802.3x flow control and half-duplex backpressure flow control
- Supports 8K MAC address list, MAC address learning and auto-ageing
- Supports Power Inductive Lightning Protection up to 6KV
- Built-in switching power adapter, support AC 110-240V 50/60Hz input
- Fanless design
- Standard 19-inch rack-mountable, 1U steel case
- Plug and play, no need configuration

## Product Features



### Multiple and flexible ports

Provide 24 10/100/1000M auto-negotiation RJ45 ports, 2 combo Gigabit SFP slots. All ports have the wire-speed forwarding capability and support IEEE 802.3x full-duplex flow control and half-duplex backpressure flow control. The multiple ports provide great flexibility for users to build networks and allow users to quickly build all kinds of wired networks.



### Excellent Lightning-Proof design

Integrated professional lightning-proof circuit which supports power lightning-proof (common mode protection 6KV). Effectively reduce the damage to the network system caused by the thundery weather.

### LAG

### Up to 2x Faster Than a Single Gigabit Connection

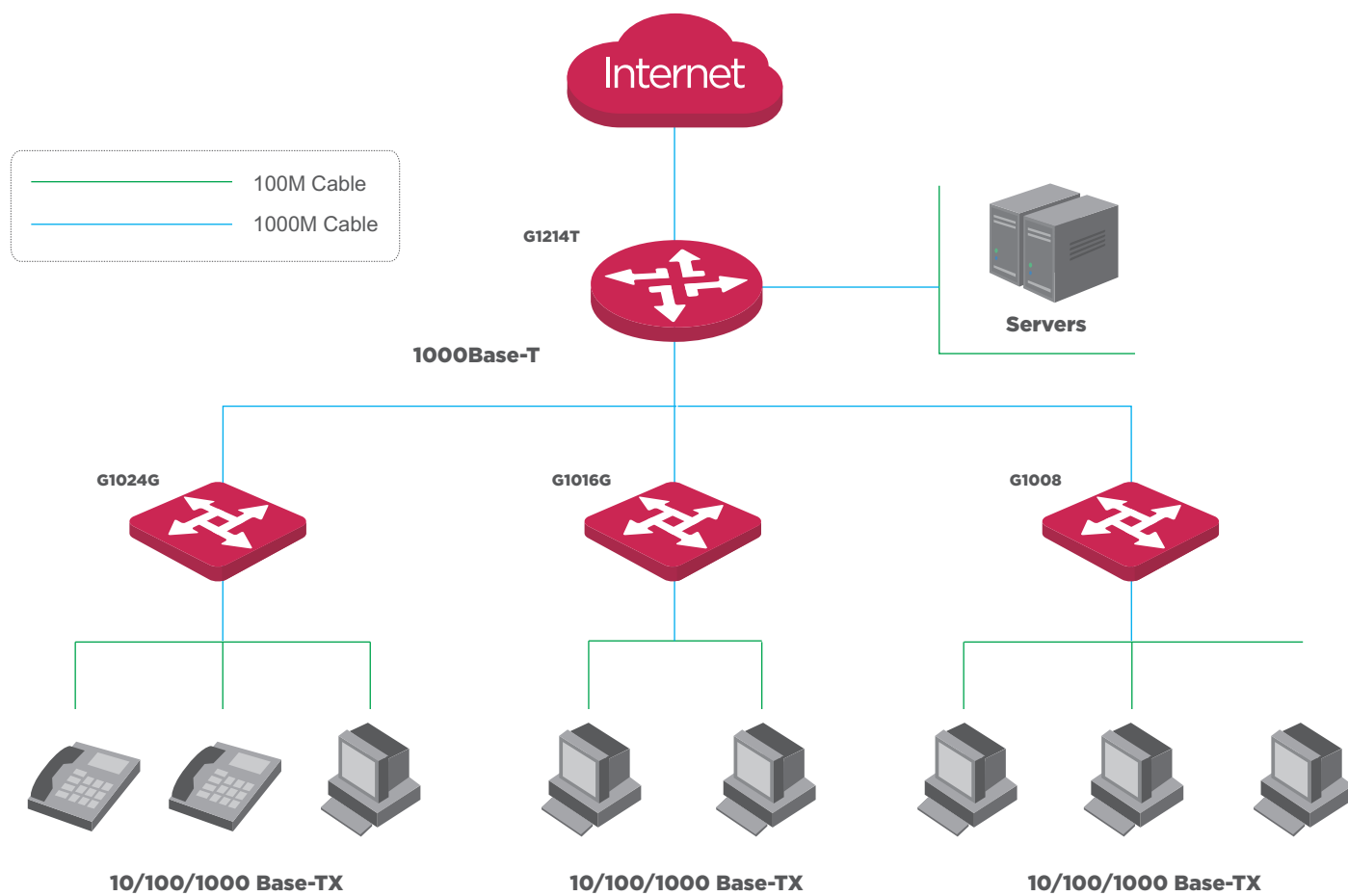
Port 23 and 24 are a link aggregation group, which can create an aggregated connection of up to 2Gbps concurrent throughput to any other link aggregation capable devices, such as IP-COM G3224T. In the office or in the SMB, with link aggregation you will get the fastest file transfers, backups, while also providing a redundant connection for fail-over.



### Easy to use

Plug-and-play, which helps you quickly build Gigabit wired network and greatly simplify the management and maintenance of equipment. It supports desktop and standard 19-inch rack mounted installation with two pairs of rack-mounted hangers, which can be easily installed in a standard 19-inch machine room cabinet.

## Application Scenarios



Product Model	G2124T
Hardware Features	
Standards&Protocols	IEEE 802.3、 IEEE 802.3u、 IEEE 802.3z、 IEEE 802.3ab、 IEEE 802.3x、 IEEE 802.3ad
Interface	24*10/100/1000Mbps RJ45 Ports, 2 Gigabit combo SFP slots (Auto Negotiation/Auto MDI/MDIX)
Transfer Method	Store-and-Forward
Switching Capacity	48Gbps
Packet Forwarding Rate	35.7Mpps
Address Table	8K
Power Consumption	<20W
Power input	100-240VAC, 50/60Hz
Dimension (L×W×H)	440mm*178mm*44mm
Fan Quantity	Fanless
Environment	Operating Temperature:: 0°C~40°C Storage Temperature: -40°C~70°C Operating Humidity: 10%~90% non-condensing Storage Humidity: 5%~90% non-condensing
Software Features	
Port Feature	IEEE802.3x flow control (full duplex)
Link Aggregation	LACP Port 23 and 24 are a link aggregation group, ( static LAG, SMAC+DMAC )



## Headquarters

IP-COM Networks Co.,Ltd.

Tel: +86 755-27653089

Fax: +86 755-27657178

Email: [marketing@ip-com.com.cn](mailto:marketing@ip-com.com.cn)

Website: [www.ip-com.com.cn](http://www.ip-com.com.cn)

ADD: Tower E3, No1001, Zhongshanyuan Road, Nanshan District, Shenzhen, China.

Copyright 2017 IP-COM Networks Co.,Ltd. All Rights Reserved

